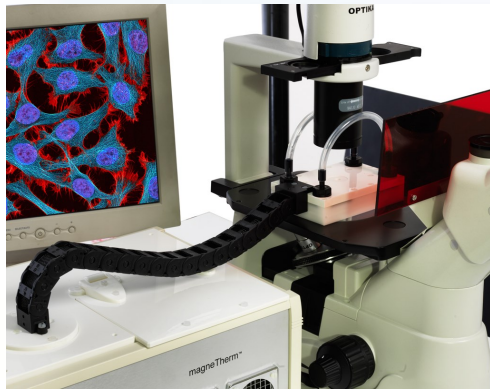


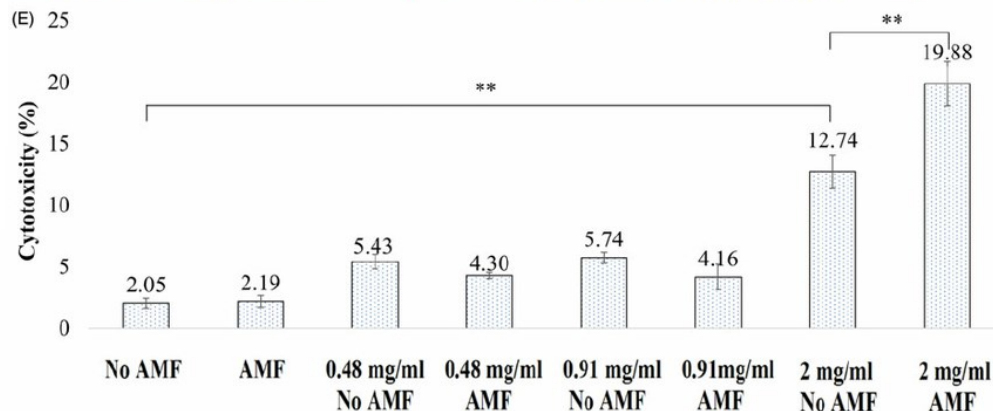
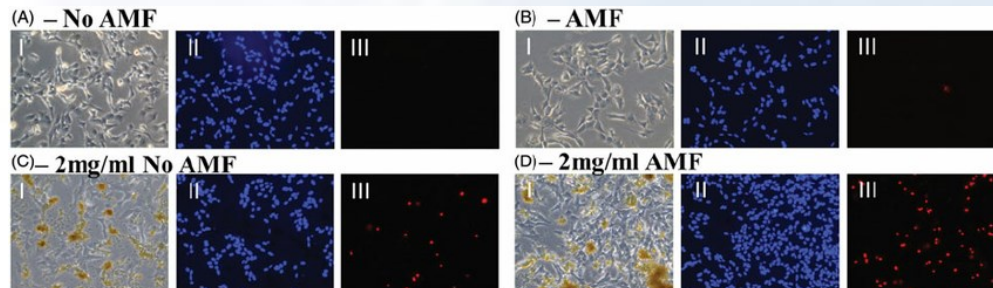
The Next wave in Nanoparticle Heating Research



Product Code: NAN201007

Live Cell Exposure Option for *In Vitro* time lapse imaging. The ergonomic design of this setup enables the user to mount it on any microscope compatible with 6/24/96 tissue culture plates.

Frequency range of 100KHz to 1000KHz



Flexible Compatibility - The Live Exposure Option can be connected to any magneTherm systems both old and new, which means that all existing users can use this unique option. The setup enables physiological temperature control and a 5% CO₂ atmosphere, so that the cells can grow uninterrupted for the required time scale. This option allows microscope experiments with AMF exposure at frequencies ranging from 100 kHz to 1 MHz with a field amplitude of up to 20 mT.

Unique additional features also allow researchers to use this setup to perform time lapse imaging with any type of microscope. This is a significant benefit over costly imaging setups that are usually



System requirements

No additional power supplies required

Connects to water supply and magneTherm™ system.

Coil Cooling via Laboratory Tap water supply or Recirculating water chiller with a Typical flow of 320mL/min.

Mechanical specifications

Dimensions of Chamber: 126 x 85 x 28mm

Track length approximately: 500mm

Chamber accommodates 35x 15mm Petri Plates

Environmental and safety specifications

Temperature ranges:

Normal operation: 5-40 °C

Storage: -20 - 70°C

Humidity: 20-80%

