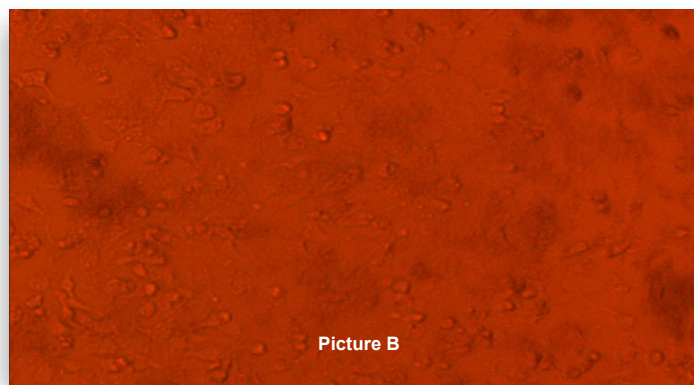
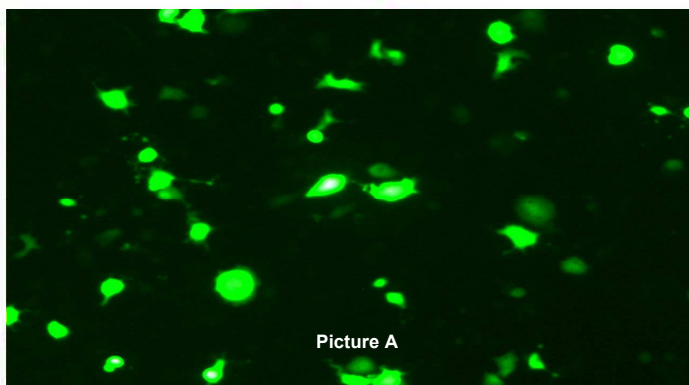


HepG2 CELLS



HepG2 Cells were transfected in a Costar® 96-well Collagen Type I-coated (1.6 mg/ml) plate using the magnefect-nano™ transfection system with 0.1 µl Neuromag and 0.2 µg of pEGFP-N1 per well. Cells were analysed 48 hours post-transfection by Fluorescence microscopy (A) and light microscopy (B).

CELL SEEDING PARAMETERS (BEST CONDITIONS)

Trypsinise for 5-15 minutes at 37°C. Tap the flask and check every 5 minutes to ensure there are no clumps.
Plate type: Costar® 96-well plate (tissue culture treated), Collagen Type I-coated (1.6 mg/ml) – Add 50 µl per well, incubate overnight at 37°C and remove it before cell seeding.
Cell seeding density: 1.0×10^4 cells/well
Cell seeding volume: 100 µl
Cell seeding time: 24 hours prior to transfection
Serum starve: No

MAGNEFACT-NANO™ PARAMETERS (BEST CONDITIONS)

Frequency: 2 Hz
Displacement: 0.2 mm
Time: 30 minutes (3600 cycles)
GFP-Neuromag complexes were left in wells
Optimal length of time for over expression: 48 hours

TRANSFECTION COMPLEX (BEST CONDITIONS)

Transfection reagent: Neuromag
Transfection reagent (volume/well): 0.1 µl
DNA (mass/well): 0.2 µg
Transfection medium: Serum-free Low Glucose DMEM
Transfection volume: 100 µl
Remove the medium before adding the transfection complex to the cells

CELL INFORMATION

Cell type: Human Liver Hepatocellular Carcinoma cell line
Species: Human
Medium: Low Glucose DMEM supplemented with 10% Fetal Calf Serum, 2 mM L-glutamine
Cell density prior to transfection: Medium (50 – 60%)
Culture condition: Temperature, 37°C; Atmosphere: 95% air, 5% CO₂