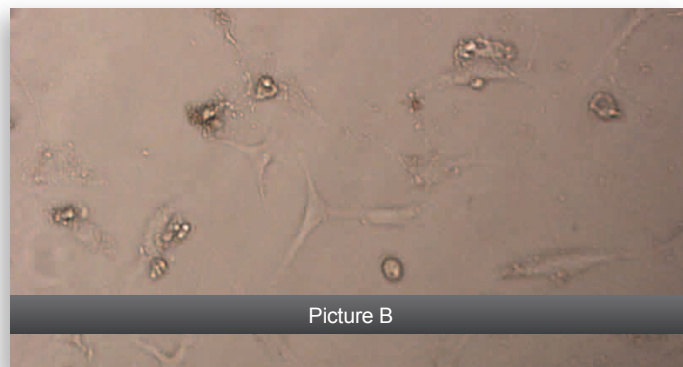
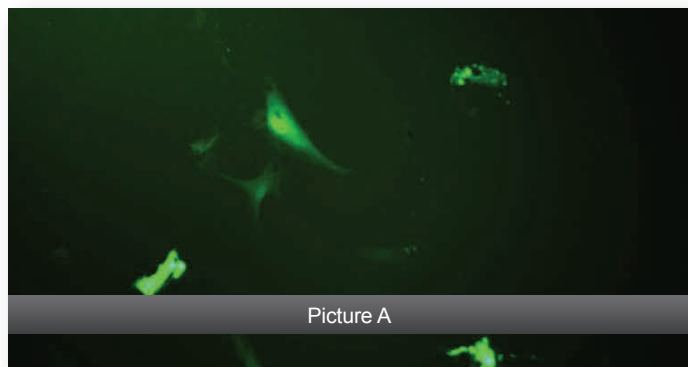


MESENCHYMAL STEM CELLS (MSC)



Mesenchymal Stem Cells were transfected in a Greiner Bio-One 96-well tissue culture treated plate using the magnfect-nano™ (96-well plate magnet) with 0.4 μ l nTMAG and 0.2 μ g of a plasmid encoding EGFP per well. Cells were seeded at 5000 cells per well and after 72 hours post-transfection, the cells were analysed by fluorescence microscopy (A) and light microscopy (B).

CELL SEEDING PARAMETERS (BEST CONDITIONS)

Plate type: Greiner Bio-One 96-well (tissue culture treated)
Cell seeding density: 5000 cells/well
Cell seeding volume: 100 μ l
Cell seeding time: 24 hours prior to transfection
Serum starve: No

MAGNEFECT-NANO™ PARAMETERS (BEST CONDITIONS)

Frequency: 2 Hz
Displacement: 0.2 mm
Time: 30 minutes (3600 cycles)

TRANSFECTION COMPLEX (BEST CONDITIONS)

Transfection reagent: nTMAG
Transfection reagent (volume/well): 0.4 μ l
DNA (mass/well): 0.2 μ g
Transfection medium: DMEM (i.e. serum - and supplement-containing)
Transfection volume: 100 μ l
Medium change after transfection: Yes

CELL INFORMATION

Cell type: Mesenchymal Stem Cells
Species: Human
Tissue origin: Bone Marrow
Morphology: Stem Cells
Medium: DMEM Medium; 5% FCS; L-glutamine; antibiotics; antimiotics; nonessential amino acids
Culture condition: Temperature, 37°C; Atmosphere: 95% air, 5% CO₂