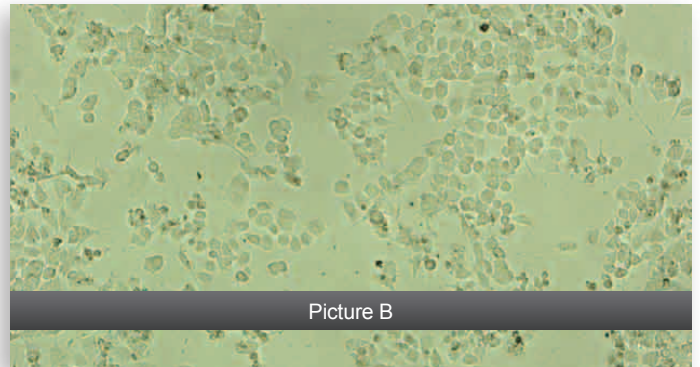
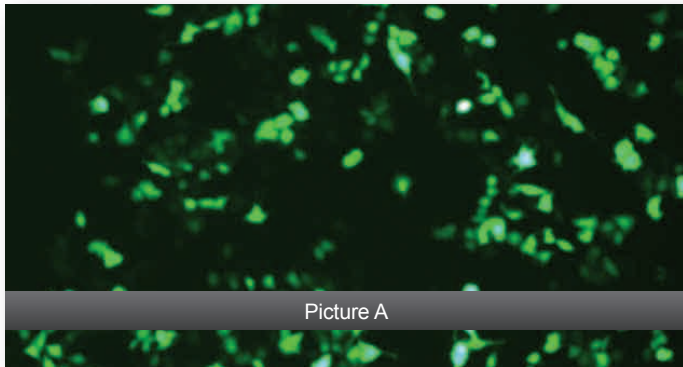


## UNDIFFERENTIATED PC12 CELLS



Undifferentiated PC12 Cells were transfected in a Iwaki® 96-well tissue culture treated plate using the magnefect-nano™ transfection system with NeuroMag and either pEGFP-N1 (A,B) or pCIK-Lux (C) per well. Cells were analysed 72 hours post-transfection by fluorescence microscopy (A), light microscopy (B) or a luciferase assay (Promega) (C).

### CELL SEEDING PARAMETERS (BEST CONDITIONS)

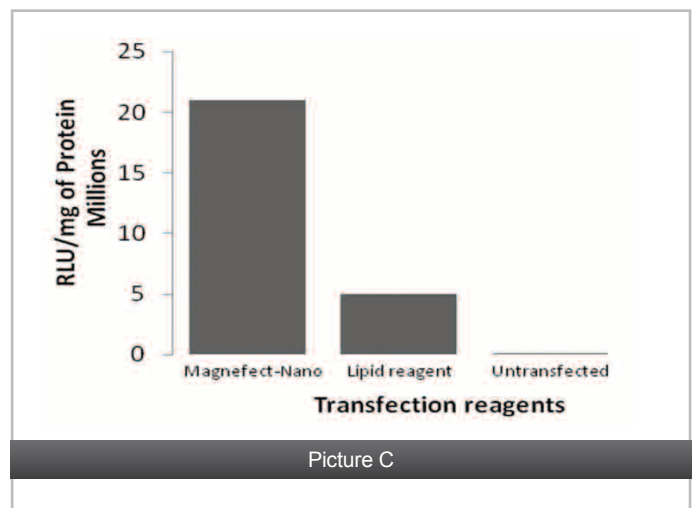
**Plate type:** Iwaki® 96-well plate (tissue culture treated), coated with Collagen Type IV  
**Cell seeding density:**  $2.0 \times 10^4$  cells/well  
**Cell seeding volume:** 100  $\mu$ l  
**Cell seeding time:** 24 hours prior to transfection  
**Serum starve:** Yes

### TRANSFECTION COMPLEX (BEST CONDITIONS)

**Transfection reagent:** Nanotherics/Oz Biosciences NeuroMag  
**Transfection reagent (volume/well):** 0.15  $\mu$ l  
**DNA (mass/well):** 0.05  $\mu$ g  
**Transfection medium:** Serum-free RPMI  
**Transfection volume:** 100  $\mu$ l

### MAGNEFACT-NANO™ PARAMETERS (BEST CONDITIONS)

**Frequency:** 2 Hz  
**Displacement:** 0.2 mm  
**Time:** 30 minutes (3600 cycles)  
DNA-nTMAG complexes were left in wells



### CELL INFORMATION

**Cell type:** PC12  
**Species:** Rat  
**Medium:** RPMI-1640 (Invitrogen) supplemented with 10% Fetal Calf Serum and 2 mM L-glutamine (Biosera)  
**Cell density prior to transfection:** Medium (50 – 60%)  
**Culture condition:** Temperature, 37°C; Atmosphere: 95% air, 5% CO<sub>2</sub>