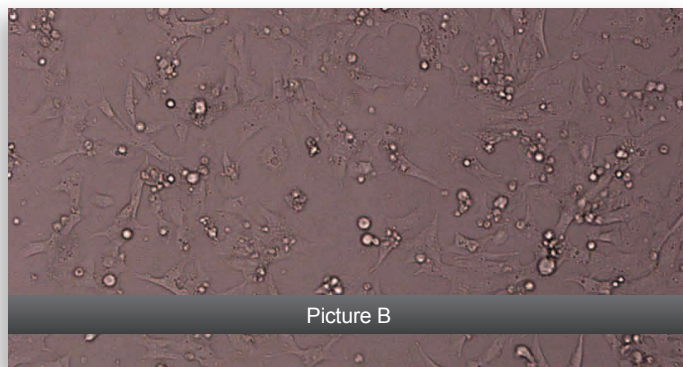
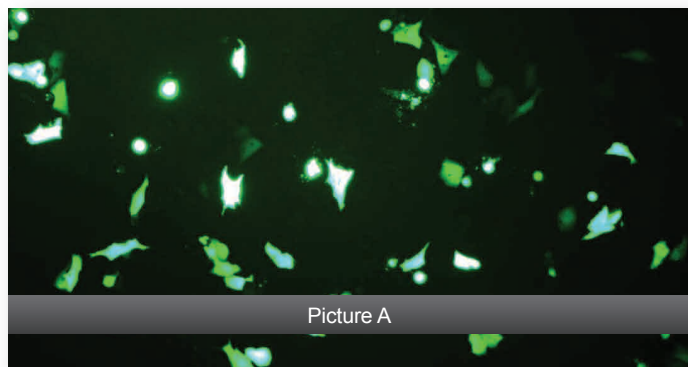


## H295R CELLS



H295R Cells were transfected in a Greiner Bio-One 96-well tissue culture treated plate using the magnefect-nano™ transfection system (96-well plate magnet) with 0.1 µl nTMAG and 0.1 µg of a plasmid encoding EGFP per well. 48 hours post-transfection, the cells were analysed by fluorescence microscopy (A) and light microscopy (B).

### CELL SEEDING PARAMETERS

**Plate type:** ● Greiner Bio-One 96-well or ■ Costar® 24-well plate (tissue culture treated)

**Cell seeding density:** ● 2.0 x10<sup>4</sup> or ■ 12.0 x10<sup>4</sup> cells/well (6.3 x10<sup>4</sup> cells/cm<sup>2</sup>)

**Cell seeding volume:** ● 100 µl or ■ 600 µl

**Cell seeding time:** 48 hours prior to transfection

**Serum starve:** No

### MAGNEFECT-NANO™ PARAMETERS

**Frequency:** 2 Hz

**Displacement:** 0.2 mm

**Time:** 30 minutes (3600 cycles)

### TRANSFECTION COMPLEX

(see magnefect-nano™ protocol for more details)

**Transfection reagent:** nTMAG

**Transfection reagent (volume/well):** ● 0.1 µl or ■ 0.6 µl

**DNA (mass/well):** ● 0.1 µg or ■ 0.6 µg

**Transfection medium:** DMEM: F12 (1:1) Medium (i.e. serum - and supplement-containing)

**Transfection volume:** ● 100 µl or ■ 600 µl

**Medium change after transfection:** Yes

### CELL INFORMATION

**Cell type:** NCI-H295R (cell line; adherent)

**Species:** Human

**Tissue origin:** Adrenal gland cortex

**Morphology:** Epithelial

**Medium:** DMEM: F12 (1:1) Medium; 10% FCS; 1% BD ITS; L-glutamine; antibiotics

**Culture condition:** Temperature, 37°C; Atmosphere: 95% air, 5% CO<sub>2</sub>

Grey (marked with a ●) denotes values for the 96-well plate magnet format

Blue (marked with a ■) denotes values for the 24-well plate magnet format