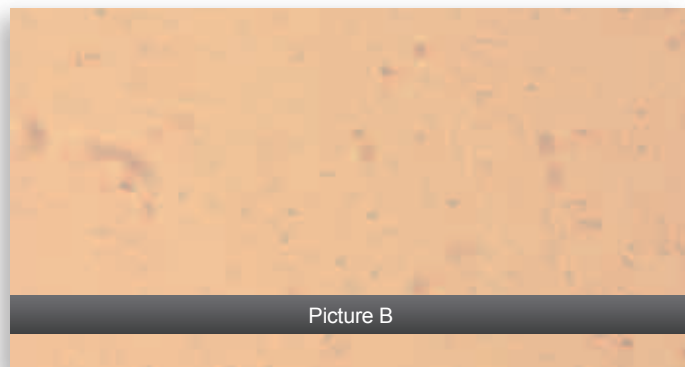
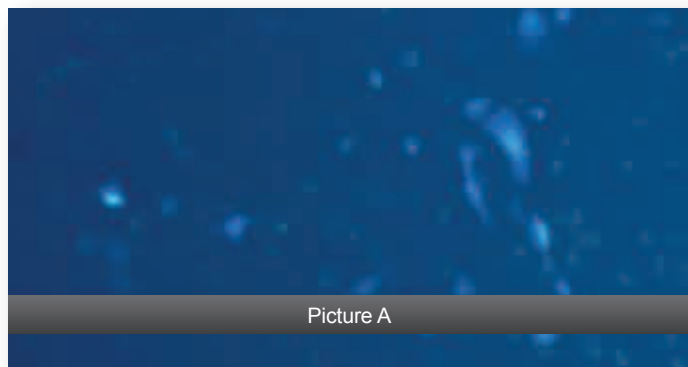


ARPE-19 CELLS



ARPE-19 Cells were transfected in a Costar® 24-well tissue culture treated plate using the magnefect-nano™ transfection system with 0.6 µl nTMAG and 0.6 µg of pEGFP-N1 per well. Cells were analysed 48 hours post-transfection by fluorescence microscopy (A) and light microscopy (B).

CELL SEEDING PARAMETERS (BEST CONDITIONS)

Plate type: Costar® 24-well plate (tissue culture treated)
Cell seeding density: 9.0×10^4 cells/well
Cell seeding volume: 600 µl
Cell seeding time: 24 hours prior to transfection
Serum starve: No

MAGNEFACT-NANO™ PARAMETERS (BEST CONDITIONS)

Frequency: 2 Hz
Displacement: 0.2 mm
Time: 45 minutes (5400 cycles)
GFP-nTMAG complexes were aspirated 5 hours after transfection
Optimal length of time for over expression: 48 hours

TRANSFECTION COMPLEX (BEST CONDITIONS)

Transfection reagent: nTMAG
Transfection reagent (volume/well): 0.6 µl
DNA (mass/well): 0.6 µg
Transfection medium: Serum-free DMEM: F12 medium
Transfection volume: 600 µl

CELL INFORMATION

Cell type: Retinal Pigment Epithelium
Species: Human
Medium: DMEM: F12 Medium, 10% FCS, 2 mM L-glutamine, 15 mM HEPES, 0.5 mM sodium pyruvate, and 1200 mg/L sodium bicarbonate
Cell density prior to transfection: Medium (60 – 70%)
Culture condition: Temperature, 37°C; Atmosphere: 95% air, 5% CO₂